

## KE VaultStream

VaultStream Server (VSS) with Olympus Knowledge Exchange (KE)



# KE VaultStream

## Simplified Clinical Workflow Solution

### VaultStream Server | Streamlined Hospital-wide Content Management

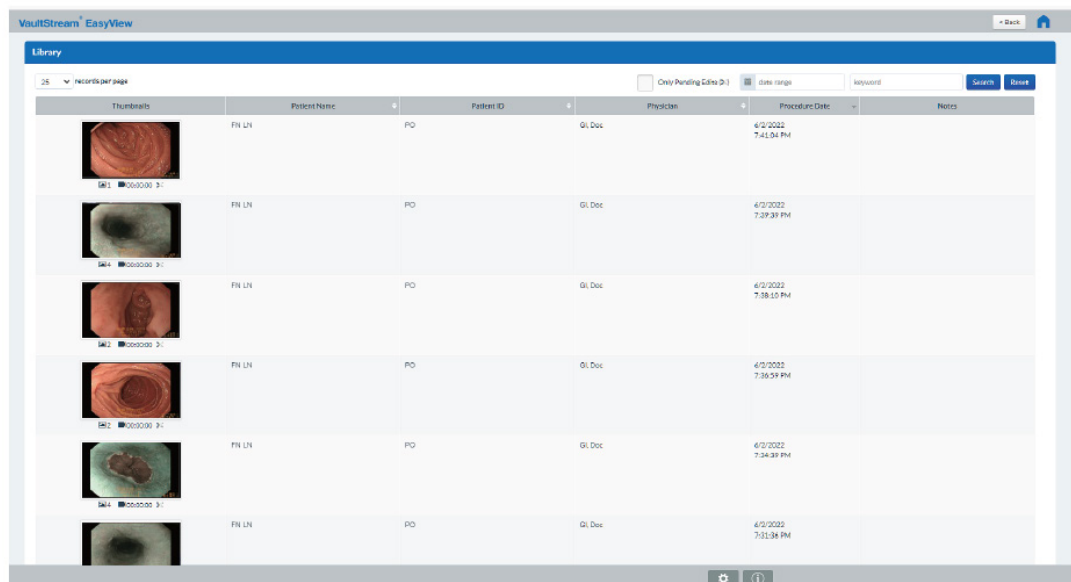
The Olympus VaultStream Server (VSS) is an intelligent, centralized content management system that provides secure, storage and access for medical case video and images across the hospital enterprise delivered in a manner that helps hospitals to comply with patient privacy regulations. A VSS traditionally supported the vendor-neutral nCare medical recorders and ES4K integration systems. The VaultStream software automatically integrates videos and images with the facility's EMR/HIS, PACS (MIMPS), or VNA and patient records via HL7 and DICOM interface options.

### Olympus Knowledge Exchange System (KE) | Space Saving Connectivity for Olympus Devices

The Olympus Knowledge Exchange System (KE) is a software platform offering centralized reprocessing record and image management through expanded connectivity of Olympus devices. The OLYMPUS KE system streamlines error prone keyboard and mouse data entry by allowing clinicians to use an easy search function within the video system center interface. Physicians can save time and reduce data entry by retrieving exam and patient information from their EMR/HIS system. With proprietary knowledge of the video system center, OLYMPUS KE offers clinicians the ability to transfer procedure images to a PACS (MIMPS) or EMR/HIS systems at the highest resolution available. OLYMPUS KE allows for connections to video system center without additional hardware taking up valuable space on the Endoscopic tower.

### KE VaultStream | Bringing VaultStream Functionality to OLYMPUS KE Customers

When used together, KE VaultStream provides customers with a combined set of HL7 and DICOM interfaces on a single server where clinicians can efficiently collaborate. The browser-based VaultStream EasyView application meets the desires of OLYMPUS KE customers looking for a versatile image management suite. Now physicians can select, label, and print images to produce an exam images document.

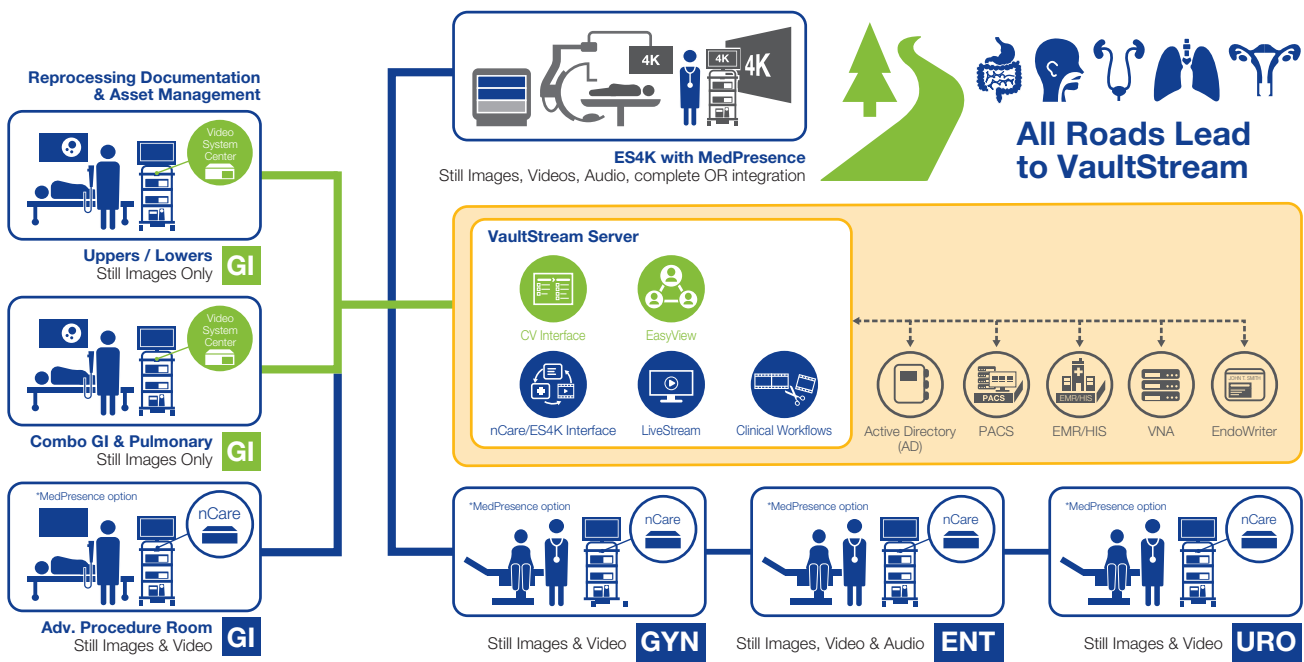


# KE VaultStream

## Simplified Clinical Workflow Solution

### Unite Your Organization

Olympus can bring departments together like never before with the KE VaultStream clinical workflow enterprise solution.



### Which Devices and Systems Connect to KE VaultStream Interface Software?

KE VaultStream\* can integrate with compatible video system centers in a single or multi-facility customer environment.

\* Each VaultStream server includes a KE Server and KE Gateway component. Each KE Gateway can support up to 50 of each type of device (CV, OER, ALT). Each KE Server can support up to 20 KE Gateways but a maximum of 100 of each type of device (CV, OER, ALT).

|                                 |                           |
|---------------------------------|---------------------------|
| Video System Center             | CV-190                    |
|                                 | CV-190 PLUS <sup>*1</sup> |
|                                 | CV-290 <sup>*1</sup>      |
|                                 | CV-1500 <sup>*3</sup>     |
| Endoscope Reprocessor           | OER-Pro <sup>*2</sup>     |
|                                 | OER-Elite <sup>*2</sup>   |
| Automated Endoscope Leak Tester | ALT-Pro <sup>*2</sup>     |

\*1 Only for Europe

\*2 Only for North America

\*3 Currently only for Europe, planned for North America

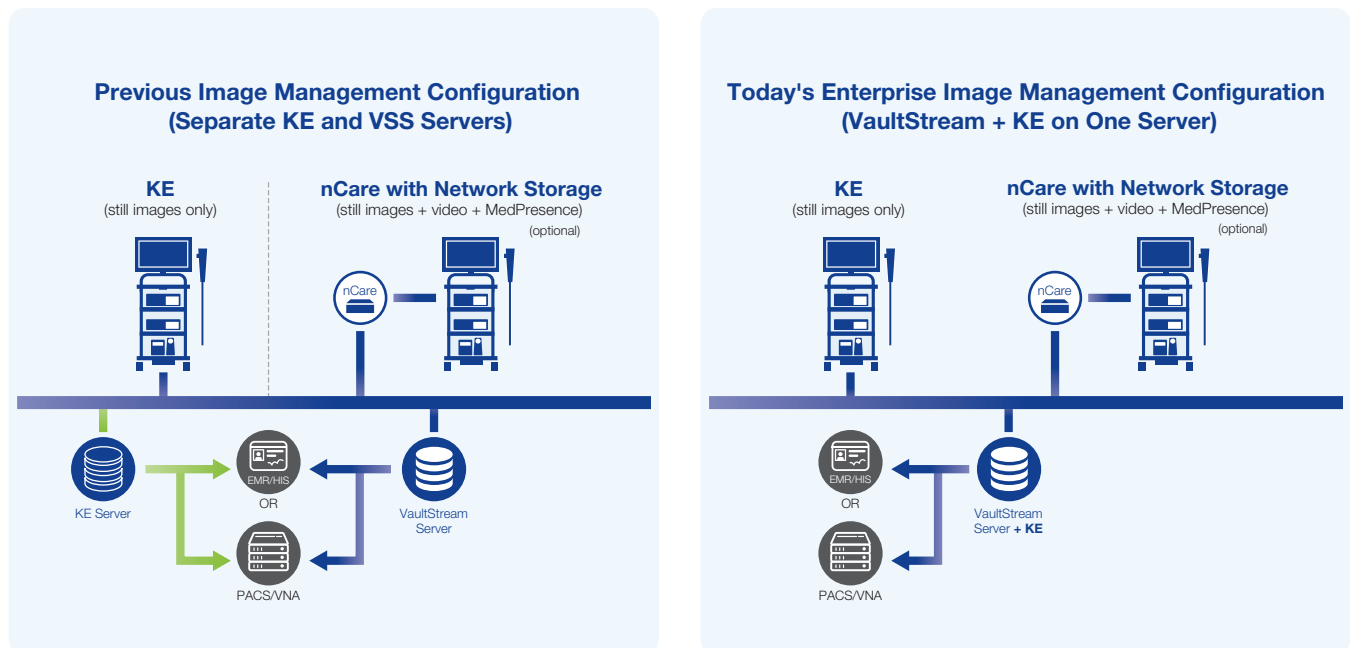
Each VaultStream Server can interface with up to three Hospital Information Systems (HIS) (three HL7 inbound and three HL7 outbound) and three DICOM connections (three MWLs (Modality Work-lists) and three PACS).

# KE VaultStream

## Simplified Clinical Workflow Solution

### How Will It Work When There Is Already a VaultStream Server Installed?

The existing VaultStream server can unite hospital departments and Olympus technology by connecting procedure rooms with KE-connected video system centers, ES4K integration systems, and nCare medical recorders. If the customer previously also had a KE server, it can be decommissioned to simplify the management of the hospital's IT infrastructure. To integrate with KE, the VaultStream server will need to be at least version 10.4.



| Model Name                        | Product Code |
|-----------------------------------|--------------|
| VaultStream                       | ISM-1011665  |
| Olympus Knowledge Exchange System | MAJ-2182     |

As medical knowledge is constantly growing, technical modifications or changes of the product design, product specifications, accessories and service offerings may be required.

**OLYMPUS**

**OLYMPUS EUROPA SE & CO. KG**  
Postbox 10 49 08, 20034 Hamburg, Germany  
Wendenstrasse 20, 20097 Hamburg, Germany  
Phone: +49 40 23773-0, Fax: +49 40 233765  
[www.olympus-europa.com](http://www.olympus-europa.com)